



# **CHATEAU LIMOUSINS 11th Annual Sale**



**Thursday 6th March  
2025 at 1pm**

**1090 Wangaratta-Eldorado  
Road,  
LONDRIGAN VIC 3678  
(via Wangaratta, Victoria)**

**Andrew  
2024 LNSS**



**Boys keeping  
and eye on  
Alana & Olivia**

**Andrew during  
his "overseeing"  
period**



**Annual Sale Snaps**





**11th Annual Sale**

**Thursday 6th March 2025**

**1:00pm**

**LOCATION:**

1090 Wangaratta-Eldorado Road,

LONDRIGAN VIC 3678

via Wangaratta, VICTORIA

(see back pages of catalogue for Directions & Map)

---

 **Nutrien**  
*Ag Solutions®*

**Peter Godbolt**

**0457 591 929**

---

**INSPECTIONS:**

From 10am Sale Day

or prior to sale by arrangement.

---

**CONTACTS:**

John & Bev McIntyre (03) 5721 8280

Andrew McIntyre 0428 191 282

Jenna McIntyre 0437 629 853

E-mail: [chateaulimousins@gmail.com](mailto:chateaulimousins@gmail.com)

Website: [www.chateaulimousins.com](http://www.chateaulimousins.com)

Facebook: [www.facebook.com/chateaulimousins](http://www.facebook.com/chateaulimousins)

---

**AUSTRALIA LIMOUSIN SOCIETY**

**CATALOGUE & EBV'S**

via website @ [www.limousin.com.au](http://www.limousin.com.au)

# A MESSAGE FROM THE MCINTYRE FAMILY

We hope that our 2025 sale offering is something you are excited about as we are. This year we have 25 bulls on offer in our annual Sale, as well as the inclusion of 15 females. We had aimed to take a large string to the Limousin National Show & Sale and most of these females were being set to go but unfortunately a serious finger injury to Andrew in October sent those plans flying out the window at a rapid rate of knots with his recovery time being potentially months and not weeks. They were selected on phenotype with our core values the main priority, a mix of outcross pedigree's and EBV's so we decided that if we were happy to take them at the National, why not still make them available and offer them through our annual Sale. While it is disappointing that we won't be at the National as an exhibitor it makes for a great opportunity for many to still purchase our genetics. Our bull draft comprises of 25 bulls from a variety of imported and domestic sires including Chateau bred proven sires. Sons of Southpaw S30, New Generation N79 & Qualification Q66 feature in the draft with some new and highly proven exciting sires in Gentry, Jock and Hardcore. All lots have had DNA submitted for Parent Verification, with a couple still being processed which will be indicated sale day. We have also tested the draft and offer 7 Homo Polled Bulls.

Through that DNA work, the implementation of genomics has had an impact on our EBV's on the entire draft, which are changing very regularly. That being said, we are impressed by what we consider to be our lead bulls still maintaining traits in the top end of the breed for those highly important traits of a short gestation with high growth rates and ending with a heavy carcass weight, which is what we get paid on in



the long run.

In the female offering there is an even mix of colours and age groups to suit everyone's joining programs from cow families that have been highly influential in our herd being donor cows, producing National quality progeny, or mothers of high priced lots at previous years sales. While there is some females we believe would make great show heifers and potential donor cows, there is one heifer in the draft that will cause most to have a wry smile when they discover she belongs to Alana and Olivia and I'm not too popular for cataloguing, but we wouldn't offer a female that we wouldn't keep for ourselves and this youngster is definitely one for the front paddock.

It is with the greatest pleasure to put forward this year's sale offering to you and look forward to seeing you sale day, but if you can't be there on the day pre sale inspections are welcome any time by contacting Andrew on 0428191282.

John & Bev, Andrew & Jenna,  
Alana & Olivia

## 2024 Sale Highlights



2024 Chateau Limousins Annual Sale

Sale Topper - Chateau Thor T26

Sold for \$12,000 to

JG Brooker Partnership, Upper Rouchel, NSW

# Important Sale Links & Where to Find Information

Scan the QR Code to be taken to the link  
for easy access to our sale Information



**OUR WEBSITE**

[www.chateaulimouins.com](http://www.chateaulimouins.com)

Access to Lot Information, Photos, Videos & Sale  
Updates. Plus Chateau News throughout the year



**OUR FACEBOOK PAGE**

[www.facebook.com/chateaulimousins/](http://www.facebook.com/chateaulimousins/)

Quick Sale Updates including Supplementary Sheet.



**YOUTUBE**

Our 11th Annual Sale  
Video Playlist  
of Lot Videos.



**AUCTIONS PLUS**

Our 11th Annual Sale -  
Online Bidding Sale Day.  
Pre Sale view of lots  
available also.

## How to register as an AuctionsPlus User/Buyer

01.

- ✓ Create an account on AuctionsPlus and set up your security PIN.

- ✓ Verify your email and phone number.

02.

- ✓ Verify your ID.

- ✓ Enter your PIC number, ABN, and business details if applicable.

- ✓ Read and accept the user rules and responsibilities.

03.

- ✓ Finalise registration by completing the user quiz.

### Sign Up



### Sign Up FAQ



### Download the App



# **SALE INFORMATION & SCHEDULE**

## **INSPECTIONS:**

Inspections from 10am sale day, or by appointment prior to sale.

## **LUNCH & REFRESHMENTS:**

Complementary lunch and refreshments will be provided sale day.

## **AUCTION START TIME:**

Auction will commence at 1:00pm

## **REGISTRATION:**

Registration is required on Sale Day as a Bidders Number System will be in operation, therefore all prospective purchasers will be required to register prior to the commencement of the sale.

## **GST:**

All lots are sold exclusive of GST. GST will be added onto the auction price upon invoicing.

## **SALE/VIDEO AUCTION:**

The live auction will be held in conjunction with video footage playing of each lot. All sale lots will be on display on the day. Further information, photos & video footage of all sale lots will be available on our Website & Facebook.

- [www.chateaulimousins.com](http://www.chateaulimousins.com)
- [www.facebook.com/chateaulimousins](http://www.facebook.com/chateaulimousins)

## **AUCTIONS PLUS:**

Please Register with Auctions Plus prior to sale.

# **SALE INFORMATION & SCHEDULE**

## **PHONE BIDDING:**

Phone bidding can be arranged prior to sale day by contacting selling Agents & vendor.

## **OUTSIDE AGENTS REBATES:**

A 2% rebate is offered to outside agents who introduce their client in writing to the vendor by Wednesday 5th March 2025 via email to [chateaulimousins@gmail.com](mailto:chateaulimousins@gmail.com) & settle within 7 days.

## **TERMS & CONDITIONS:**

Nutrien are settling Agents.

Payment terms are 10 days with purchasers booking to a preferred Agent or Direct settlement within the terms.

## **ACCOMMODATION IN WANGARATTA:**

Quality Hotel Wangaratta Gateway (03) 5721 8399

Wangaratta Motor Inn (03) 5721 5488

Advance Motel (03) 5721 9100

City Reach Motel (03) 5721 8433

# **HEALTH STATUS**

Chateau Limousin carries a "J-BAS 6" status.

All lots have been treated with 7 in 1, Multi-Min, Cydectin & Pesti Tested Negative.



# POST SALE

## **TRANSFERS:**

All lots can be transferred with Limousin Australia to new owners on request. Please let the settling agent know on the day.

## **DELIVERIES & TRANSPORT:**

No deliveries/transport of purchases will be available on Sale day unless prior arrangement with Andrew McIntyre - 0428 191 282.

Free delivery to major centers - Colac, Pakenham, Hamilton, Bendigo & Wagga Wagga. Assistance to other buyers will be considered if needed.

## **INSURANCE:**

Purchase becomes the buyers responsibility at the fall of the hammer. While all care will be taken by the vendor we recommend that buyers insure any lots purchased with their local insurance team.

## **INTERSTATE PURCHASERS:**

The vendor agrees to hold any stock for interstate purchasers until any required tests have been completed.

-----

## **SAFETY DISCLAIMER & SALE DAY SAFETY:**

The owners, employees & representatives of Chateau accept no liability for any accidents or injuries that may occur on the day of the Chateau Annual Sale. Although such occurrence are rare, any persons attending the Chateau Sale do so at their own risk while on the property.

The background is a solid blue color with several large, overlapping circular or semi-circular shapes in varying shades of blue, creating a layered, geometric effect.

# Bulls



2

**CHATEAU ULVERSTONE U51****(PP B AA)****TATTOO:** JWMPU51 **BORN:** 15/4/2023 **GRADE:** Pure

<b>Hetero Black</b> (by DNA test)	<b>Homo. Polled</b> (by DNA test)	<b>%FB:</b> 94.64	<b>Sire</b> <b>Verified</b>
--------------------------------------	--------------------------------------	-------------------	--------------------------------

SYES BACKSTAGE 466B (IMUPK466) (PP BB AA)

**SIRE: CHATEAU QUALIFICATION (PP B AA)**

CHATEAU NOIRE OPAL (JWMPN6) (P B AA)

CHATEAU GENIUS (JWMFG30) (P A U)

**DAM: CHATEAU LUNA ECLIPSE (P A AA)**

CHATEAU HIGH FLYER (JWMFH50) (P A U)

**January 2025 Southern Limousin BREEDPLAN**

Gest.	BWt	Milk	200wt	400wt	600wt	Doc
-0.7	+3.9	+12	+33	+62	+87	+60

(TRAITS OBSERVED: GL,BWT,200WT,400WT,600WT,SS,DOC,Genomics)

Purchaser \_\_\_\_\_ \$ \_\_\_\_\_



Ulverstone U51 has been the standout since birth and is a bull with true Sire appeal. Beautifully natured, a smooth & soft muscle pattern that's long-bodied with genuine weight gain and performance. A Homo Polled Black sire that we feel is our best son of Q66 who sold at the Limousin National for \$18,500. U51 is from the same cow that produced Queenscliff Q22, selling for \$14,000 in our 2021 sale to Lava Vale Limousin's. We have used U51 to back up our AI program in the Autumn. Semen retained.

3

## CHATEAU UNFORGETTABLE U12

(P A AA)

**TATTOO:** JWMFU12    **BORN:** 21/2/2023    **GRADE:** French Pure

Apricot

Polled

%FB: 100

Sire  
Verified

1-WAY JUST MACHO (IMCFX8554) (PP R U)

**SIRE: GHR POLLED ZANE (P A AA)**

HBL NEW WAVE (PEDFY257) (H R U)

MERIDEN POLL HEAVYDUTY (PKRFH70) (PP A AA)

**DAM: CHATEAU NATURAL LOOK (P A AA)**

CHATEAU CHAMPAGNE (JWMFC48) (H A U)

### January 2025 Southern Limousin BREEDPLAN

Gest.	BWt	Milk	200wt	400wt	600wt	Doc
-2.8	+2.8	+4	+21	+39	+54	+48

(TRAITS OBSERVED: BWT,200WT,400WT,600WT,SS,DOC)

Purchaser \_\_\_\_\_ \$ \_\_\_\_\_



U12 is a Polled French Pure sire that will impress with his length, width and presence. A bull that is wide over his top and thick behind with a lot of volume. A flush in his dam was purchased by Rigdale Limousin's in Gippsland in our 2023 sale. Full brothers to Lots 6 and 8.



4

## CHATEAU URBAN LEGEND U70

(P A AA)

**TATTOO:** JWMPU70    **BORN:** 13/9/2023    **GRADE:** Pure

<b>Apricot</b>	<b>Hetero Polled (by DNA test)</b>	<b>%FB: 93.98</b>	<b>Sire Verified</b>
----------------	--	-------------------	--------------------------

TOMV DIESEL 619D (PEDP619D)

**SIRE: TREF HARDCORE 204H (PP R AA)**

TREF DELANEY 204D (PEDP204D) (P R U)

MERIDEN POLL HEAVYDUTY (PKRFH70) (PP A AA)

**DAM: CHATEAU PENDANT (P A AA)**

LONGREACH DAMASK (BCTFD15) (H A AA)

January 2025 Southern Limousin BREEDPLAN						
Gest.	BWt	Milk	200wt	400wt	600wt	Doc
-4.7	+3.4	+9	+35	+60	+85	+63

(TRAITS OBSERVED: 200WT, 400WT, SS, DOC, Genomics)

Purchaser \_\_\_\_\_ \$ \_\_\_\_\_



Urban Legend is a docile bull that will put some serious weight into his calf crop. Smooth polled, soft coated that's loaded with volume and red meat. A favourite since an early age, his calves will come early with rapid growth for those looking to target specific weight ranges. Maternal brother sold to the Western District in 2023 for \$7,000. His full sister will open our female offering at Lot 26.

5

**CHATEAU URANIUM U67****(PP B AA)****TATTOO:** JWMPU67 **BORN:** 10/9/2023 **GRADE:** Pure**Hetero Black**  
(by DNA test)**Homo. Polled**  
(by DNA test)**%FB:** 90.72**Parent**  
**Verified**

LVLS POLLED JUSTICE 0601E (PEDPB9260)

**SIRE: HUNT MR JOCK 44J (P B AA)**

HUNT MISS GIGGLE 129G (PEDPB9263)

EXLR NATIVE 7133N (IMUPY7133) (PP BB AC)

**DAM: CHATEAU MYSTERIOUS (P B AC)**

MONTROSE HEROINE (AJMPH27) (P B U)

**January 2025 Southern Limousin BREEDPLAN**

Gest.	BWt	Milk	200wt	400wt	600wt	Doc
-4.5	+2.5	+10	+30	+54	+77	+63

*(TRAITS OBSERVED: 200WT,400WT,SS,DOC,Genomics)*

Purchaser \_\_\_\_\_ \$ \_\_\_\_\_



A Black, Homo Polled son of breed legend Hunt Mr Jock, U67 is Andrew's favourite spring drop bull. With a great set of numbers that are backed by being at the heavy end of his group. A bull that's long from head to tail, is deep-sided with a big broad sires head and is soft made. Full brother sells as Lot 9 and maternal brother to Lot 25. Semen retained.

6

**CHATEAU UNBEATABLE U4****(P A AA)****TATTOO:** JWMFU4    **BORN:** 15/2/2023    **GRADE:** French Pure

Apricot

Polled

%FB: 100

Sire  
Verified

1-WAY JUST MACHO (IMCFX8554) (PP R U)

**SIRE: GHR POLLED ZANE (P A AA)**

HBL NEW WAVE (PEDFY257) (H R U)

MERIDEN POLL HEAVYDUTY (PKRFH70) (PP A AA)

**DAM: CHATEAU NATURAL LOOK (P A AA)**

CHATEAU CHAMPAGNE (JWMFC48) (H A U)

**January 2025 Southern Limousin BREEDPLAN**

Gest.	BWt	Milk	200wt	400wt	600wt	Doc
-2.8	+3	+4	+22	+43	+59	+49

(TRAITS OBSERVED: BWT,200WT,400WT,600WT,SS,DOC)

Purchaser \_\_\_\_\_ \$ \_\_\_\_\_



Unbeatable is a bull that John really likes. A bull that's got that traditional muscle shape, is big through his midsection with a big back end for producers looking for muscle and extra yield. Embryos of the same joining were sold in our 2023 sale to Meriden Limousin's. Full brother to Lots 3 and 8.

Under Pressure was purchased as a calf at foot on his dam Longreach Maxine at the Royal Rumble Sale held at Melbourne Royal Show in 2023 with Garren Park Genetics. He is Homo Polled, moderately framed, deep-bodied and as soft as butter with a big back end and a beautiful nature.

8

## CHATEAU UPTON U19

(PP A AA)

**TATTOO:** JWMFU19    **BORN:** 24/2/2023    **GRADE:** French Pure

<b>Apricot</b>	<b>Homo. Polled (by DNA test)</b>	<b>%FB: 100</b>	<b>Sire Verified</b>
----------------	---------------------------------------	-----------------	--------------------------

1-WAY JUST MACHO (IMCFX8554) (PP R U)

**SIRE: GHR POLLED ZANE (P A AA)**

HBL NEW WAVE (PEDFY257) (H R U)

MERIDEN POLL HEAVYDUTY (PKRFH70) (PP A AA)

**DAM: CHATEAU NATURAL LOOK (P A AA)**

CHATEAU CHAMPAGNE (JWMFC48) (H A U)

January 2025 Southern Limousin BREEDPLAN						
Gest.	BWt	Milk	200wt	400wt	600wt	Doc
-3	+2.6	+5	+20	+39	+48	+49

(TRAITS OBSERVED: BWT, 200WT, 400WT, 600WT, SS, DOC, Genomics)

Purchaser \_\_\_\_\_ \$ \_\_\_\_\_



A full brother to Lots 3 & 6, U19 is a Homo Polled French bull that's got that traditional muscle and shape. An ideal bull for someone looking to add square tops and big butts to their calve crop. From a prominent cow family that has produced many of our National females in recent years.



9

**CHATEAU UNOFFICIAL U55****(H B AA)****TATTOO:** JWMPU55 **BORN:** 2/9/2023 **GRADE:** Pure**Hetero Black**  
**(by DNA test)****Horned****%FB:** 90.72**Parent**  
**Verified**

LVLS POLLED JUSTICE 0601E (PEDPB9260)

**SIRE: HUNT MR JOCK 44J (P B AA)**

HUNT MISS GIGGLE 129G (PEDPB9263)

EXLR NATIVE 7133N (IMUPY7133) (PP BB AC)

**DAM: CHATEAU MYSTERIOUS (P B AC)**

MONTROSE HEROINE (AJMPH27) (P B U)

**January 2025 Southern Limousin BREEDPLAN**

Gest.	BWt	Milk	200wt	400wt	600wt	Doc
-5.4	+2	+11	+30	+54	+74	+63

*(TRAITS OBSERVED: 200WT,400WT,SS,DOC,Genomics)*

Purchaser \_\_\_\_\_ \$ \_\_\_\_\_



U55 is a black bull that is thick, wide, long and heavy. A good set of figures reading true to his growth pattern, U55 is a bull that will give producers heavy calves from the traditional milk vealer through to heavy bodies targeted at MSA programs. Full brother to Lot 5 and maternal brother to Lot 25.

10

**CHATEAU ULURU U47****(PP B AA)****TATTOO:** JWMPU47 **BORN:** 29/3/2023 **GRADE:** Pure**Hetero Black**  
**(by DNA test)****Homo. Polled**  
**(by DNA test)****%FB:** 91.99**Parent**  
**Verified**

MANDAYEN MR JOCK K10 (MDNPK10) (P R AA)

**SIRE: CHATEAU SOUTH PAW S30 (P B AA)**

CHATEAU NIGHTSHADE N92 (JWMPN92) (P B AA)

CHATEAU NEXT LEVEL (JWMPN5) (P B U)

**DAM: CHATEAU QUINETTE Q74 (PP B AA)**

CHATEAU NIGHT OUT (JWMFN22) (P A AA)

**January 2025 Southern Limousin BREEDPLAN**

Gest.	BWt	Milk	200wt	400wt	600wt	Doc
0.8	+2	+6	+19	+39	+55	+53

*(TRAITS OBSERVED: GL,BWT,200WT,400WT,600WT,SS,DOC,Genomics)*

Purchaser \_\_\_\_\_ \$ \_\_\_\_\_



A Homo Polled, Black bull that gets better every day. A soft bull that is long bodied, strong over his back with a big square back end. Sired by Southpaw, equal top-priced bull in our 40th Anniversary Sale in 2023, selling to Craig and Shelly Devine's Angledale Limousin's, Uluru is a bull that will be sought after sale day.

11

# CHATEAU UNION JACK U30

(P A AA)

**TATTOO:** JWMFU30    **BORN:** 11/3/2023    **GRADE:** French Pure

<b>Apricot</b>	<b>Hetero Polled (by DNA test)</b>	<b>%FB: 100</b>	<b>Sire Verified</b>
----------------	--	-----------------	--------------------------

MERIDEN POLL HEAVYDUTY (PKRFH70) (PP A AA)

**SIRE: CHATEAU NEW GENERATION (P A AA)**

MONTROSE GOLDEN GIRL (AJMFG20) (H A AA)

GHR POLLED ZANE (IMCFH4) (P A AA)

**DAM: CHATEAU RHAPSODY (P A AA)**

CHATEAU LADY GENAVIVE (JWMFL1) (H A U)

January 2025 Southern Limousin BREEDPLAN						
Gest.	BWt	Milk	200wt	400wt	600wt	Doc
-4.5	+2.4	+8	+24	+35	+54	+21

(TRAITS OBSERVED: GL,BWT,200WT,400WT,600WT,SS,DOC,Genomics)

Purchaser \_\_\_\_\_ \$ \_\_\_\_\_



Union Jack is a bull that will appeal to most producers looking for that butt shape that Limousins are renowned for. A son of previous sale topper N79, who sold to Rigdale Limousin's in our 2019 sale and also produced Chateau Thor T26, who topped last year's sale for \$12,000. U30 is an ideal bull to put over F1 cows with a short gestation and good early growth to get them off early with square back ends.

12

**CHATEAU UPGRADE U79****(P B AA)****TATTOO:** JWMPU79 **BORN:** 2/10/2023 **GRADE:** Pure**Hetero Black**  
(by DNA test)**Hetero Polled**  
(by DNA test)**%FB:** 94.27**Sire**  
**Verified**

SYES BACKSTAGE 466B (IMUPK466) (PP BB AA)

**SIRE: CHATEAU QUALIFICATION (PP B AA)**

CHATEAU NOIRE OPAL (JWMPN6) (P B AA)

CHATEAU NEVEDA (JWMFN93) (P A U)

**DAM: CHATEAU REVEAL (P A U)**

CHATEAU POSTER GIRL (JWMP70) (H A U)

**January 2025 Southern Limousin BREEDPLAN**

Gest.	BWt	Milk	200wt	400wt	600wt	Doc
-1.6	+3.1	+16	+34	+55	+80	+58

(TRAITS OBSERVED: GL,200WT,400WT,SS,DOC,Genomics)

Purchaser \_\_\_\_\_ \$ \_\_\_\_\_



A Black, Polled son of Q66 that displays the length and softness of his sire. U79 is a young bull that would suit producers aiming at grass-fed programs looking for heavy carcass weights. Upgrade U79 boasts impressive EBV in the top 3% of the breed for all growth traits and carcass weight.

13

**CHATEAU UNIFY U14****(P R AA)****TATTOO:** JWMPU14 **BORN:** 22/2/2023 **GRADE:** Pure

Red                      Hetero Polled                      %FB: 95.48                      Sire  
                                  (by DNA test)                                      Verified

PLNS POLLED EXECUTIONER 19E (PEDP19E) (P B U)

**SIRE: JYF GENTRY 507G (PP B AA)**

JYF BARCODE 55B (PEDP55B) (P R U)

1-WAY JUST GORGEOUS (IMCFW11) (P A AC)

**DAM: CHATEAU KISS ME (H A AC)**

CHATEAU BRETTELLE (JWMFB61) (H A U)

**January 2025 Southern Limousin BREEDPLAN**

Gest.	BWt	Milk	200wt	400wt	600wt	Doc
-4.6	+0.4	+7	+19	+31	+39	+68

*(TRAITS OBSERVED: BWT,200WT,400WT,600WT,SS,DOC,Genomics)*

Purchaser \_\_\_\_\_ \$ \_\_\_\_\_



An attractive, dark red moderate framed son of calving ease sire Gentry, U14 is an ideal choice to use over maiden heifers. A bull with a short gestation and low birthweight that's deep-sided, slick coated, thick as a brick and with a great docility.



14

**CHATEAU ULTIMATUM U68****(P B AA)****TATTOO:** JWMPU68 **BORN:** 10/9/2023 **GRADE:** Pure**Hetero Black**  
**(by DNA test)****Hetero Polled**  
**(by DNA test)****%FB:** 91.11**Parent**  
**Verified**

RICHMOND ZODIAC SRD 29Z (IMCPH29) (PP R U)

**SIRE: GOLDSTEIN PARK NEXT LEVEL N25 (PP B AC)**

RICHMOND ZANDY SRD 49Z (IMCPH49) (P B U)

MARYVALE HAMMERTIME H300 (AMSPH300) (P B U)

**DAM: CHATEAU PANACHE P3 (P B AA)**

MONTROSE JACINTA (AJMPJ33) (P B U)

**January 2025 Southern Limousin BREEDPLAN**

Gest.	BWt	Milk	200wt	400wt	600wt	Doc
-5.2	+0.1	+10	+20	+38	+55	+48

*(TRAITS OBSERVED: GL,200WT,400WT,SS,DOC,Genomics)*

Purchaser \_\_\_\_\_ \$ \_\_\_\_\_



An attractive son of donor cow P3, Ultimatum is a Black, Polled heifer option that is soft haired, well mannered and as soft as butter. An easy doing early maturing bull that is a maternal brother to Chateau Taurus T78, who sold last year for \$9,000.

15

**CHATEAU UNITED U43****(P A AA)****TATTOO:** JWMPU43 **BORN:** 24/3/2023 **GRADE:** Pure**Apricot****Polled****%FB:** 94.64**Parent  
Verified**

SYES BACKSTAGE 466B (IMUPK466) (PP BB AA)

**SIRE: CHATEAU QUALIFICATION (PP B AA)**

CHATEAU NOIRE OPAL (JWMPN6) (P B AA)

CHATEAU NEW GENERATION (JWMFN79) (P A AA)

**DAM: CHATEAU RADIANT (H A AA)**

CHATEAU LOTSA LOVE (JWMFL51) (P A U)

**January 2025 Southern Limousin BREEDPLAN**

Gest.	BWt	Milk	200wt	400wt	600wt	Doc
-1.8	+1.1	+12	+23	+40	+49	+36

*(TRAITS OBSERVED: GL,BWT,200WT,400WT,600WT,SS,DOC)*

Purchaser \_\_\_\_\_ \$ \_\_\_\_\_



U43 is a low birthweight bull with a pedigree full of high priced animals for us at the national and at home. A free moving, long bull that would work over heifers. Full brother sold in last year's sale.

16

**CHATEAU ULM U7****(P A U)****TATTOO:** JWMPU7 **BORN:** 18/2/2023 **GRADE:** Pure**Apricot****Polled****%FB:** 95.96

WULFS XTRACTOR X233X (IMUPF233) (PP A AA)

**SIRE: GOLDSTEIN PARK PHOENIX P10 (PP A AA)**

GOLDSTEIN PARK MISS ARIZONA (GSNPM1) (P R AA)

CHATEAU GENIUS (JWMFG30) (P A U)

**DAM: CHATEAU KOOL FLAME (P A U)**

MONTROSE EMBER (AJMFE9) (H A U)

**January 2025 Southern Limousin BREEDPLAN**

Gest.	BWt	Milk	200wt	400wt	600wt	Doc
-5.5	+2	+6	+30	+55	+64	+40

(TRAITS OBSERVED: GL,BWT,200WT,400WT,600WT,SS,DOC)

Purchaser \_\_\_\_\_ \$ \_\_\_\_\_



Ulm U7 is a dark red, clean coated bull that commands attention. A bull that will sire calves that are born early but have rapid growth with his 200 & 400 day EBV's well inside the top 10% of the breed, making him an ideal choice for those targeting specific markets.

17

**CHATEAU UPSHOT U88****(H B U)****TATTOO:** JWMPU88 **BORN:** 17/10/2023 **GRADE:** Pure

**Black**      **Horned**      **%FB:** 92.03      **Sire**  
**Verified**

MANDAYEN MR JOCK K10 (MDNPK10) (P R AA)

**SIRE: CHATEAU SOUTH PAW S30 (P B AA)**

CHATEAU NIGHTSHADE N92 (JWMPN92) (P B AA)

RLF X MAN 573X (IMCPF573) (P B AA)

**DAM: CHATEAU KLASSY GAL (P B U)**

MONTROSE GLORY AND FAME (AJMPG24) (P B U)

**January 2025 Southern Limousin BREEDPLAN**

Gest.	BWt	Milk	200wt	400wt	600wt	Doc
-3.5	+2.5	+9	+29	+50	+74	+25

(TRAITS OBSERVED: GL,200WT,400WT,SS,DOC)

Purchaser \_\_\_\_\_ \$ \_\_\_\_\_



The youngest bull in the sale, U88 is an easy fleshing Southpaw calf with some extra horsepower. A soft skinned bull that is big topped, deep bodied and thick behind. Dam K59 produced Nightwatchman N89, a bull we used over heifers with sons in our 2022 sale, 2 of which sold for Stud duties. If you need a black bull to give you weight and shape, U88 should be on your shortlist.

18

**CHATEAU USCH U32****(P A AA)****TATTOO:** JWMPU32 **BORN:** 12/3/2023 **GRADE:** Pure**Apricot****Polled****%FB:** 94.64**Sire  
Verified**

SYES BACKSTAGE 466B (IMUPK466) (PP BB AA)

**SIRE: CHATEAU QUALIFICATION (PP B AA)**

CHATEAU NOIRE OPAL (JWMPN6) (P B AA)

CHATEAU NAPOLEON N20 (JWMFN20) (H A AA)

**DAM: CHATEAU RAINBOW R21 (H A AA)**

CHATEAU LUNA ECLIPSE (JWMFL68) (P A AA)

**January 2025 Southern Limousin BREEDPLAN**

Gest.	BWt	Milk	200wt	400wt	600wt	Doc
-1.4	+2.2	+12	+28	+47	+63	+60

(TRAITS OBSERVED: BWT,200WT,400WT,600WT,SS,DOC)

Purchaser \_\_\_\_\_ \$ \_\_\_\_\_



From the same cow family as Queenscliff, a previous high-priced bull and Ulverstone U51, Lot 2. A high weight gain bull, U32 is a long bodied, soft muscled bull that is easy doing that would be best suited to cows. A bull that is docile and will add some extra weight to his calf crop.

19

**CHATEAU USAIN U36****(P B AA)****TATTOO:** JWMPU36 **BORN:** 16/3/2023 **GRADE:** Pure

Black

Polled

%FB: 94.64

Sire  
Verified

SYES BACKSTAGE 466B (IMUPK466) (PP BB AA)

**SIRE: CHATEAU QUALIFICATION (PP B AA)**

CHATEAU NOIRE OPAL (JWMPN6) (P B AA)

DAY (IMFFD44) (H A AA)

**DAM: CHATEAU MINX (H A AA)**

CHATEAU JANOLA (JWMFJ23) (H A AA)

**January 2025 Southern Limousin BREEDPLAN**

Gest.	BWt	Milk	200wt	400wt	600wt	Doc
-3	+2.7	+10	+27	+48	+73	+46

(TRAITS OBSERVED: GL,BWT,200WT,400WT,600WT,SS,DOC)

Purchaser \_\_\_\_\_ \$ \_\_\_\_\_



Another Q66 son who has a short gestation but maintains good growth to be an ideal bull to cover most markets from heavy vealers to export bodies with good carcass merit. A maternal brother to Quantong Q2, who opened the sale in 2021.

20

## CHATEAU URANA U3

(P A AC)

**TATTOO:** JWMPU3 **BORN:** 14/2/2023 **GRADE:** Pure

**Apricot** **Hetero Polled** **%FB: 95.48** **Sire**  
(by DNA test) **Verified**

PLNS POLLED EXECUTIONER 19E (PEDP19E) (P B U)

**SIRE: JYF GENTRY 507G (PP B AA)**

JYF BARCODE 55B (PEDP55B) (P R U)

1-WAY JUST GORGEOUS (IMCFW11) (P A AC)

**DAM: CHATEAU KISS ME (H A AC)**

CHATEAU BRETELLE (JWMFB61) (H A U)

### January 2025 Southern Limousin BREEDPLAN

Gest.	BWt	Milk	200wt	400wt	600wt	Doc
-6.6	+1.3	+9	+27	+45	+60	+68

(TRAITS OBSERVED: BWT,200WT,400WT,600WT,SS,DOC,Genomics)

Purchaser \_\_\_\_\_ \$ \_\_\_\_\_



U3 is another low birthweight option that would suit F1 females. Urana U3 is a docile bull with a lot of thickness, is early maturing with a 200 day EBV in the top 15% for those looking for heavy, clean coated calves and has a great nature. Brother to Lot 13.



21

**CHATEAU UPPERCUT U77****(PP B AA)****TATTOO:** JWMPU77 **BORN:** 30/9/2023 **GRADE:** Pure

**Hetero Black**      **Homo. Polled**      **%FB: 89.21**      **Sire**  
 (by DNA test)      (by DNA test)           **Verified**

MANDAYEN MR JOCK K10 (MDNPK10) (P R AA)

**SIRE: CHATEAU SOUTH PAW S30 (P B AA)**

CHATEAU NIGHTSHADE N92 (JWMPN92) (P B AA)

SYES BACKSTAGE 466B (IMUPK466) (PP BB AA)

**DAM: CHATEAU PERSIAN (P B U)**

CHATEAU LAMINGTON (JWMPL33) (P B U)

**January 2025 Southern Limousin BREEDPLAN**

Gest.	BWt	Milk	200wt	400wt	600wt	Doc
-3.6	+0.2	+13	+19	+36	+51	+48

(TRAITS OBSERVED: GL,200WT,400WT,SS,DOC,Genomics)

Purchaser \_\_\_\_\_ \$ \_\_\_\_\_



A low birth weight, short gestation Southpaw calf that's Black and Homo Polled. A long, smooth muscled, soft skinned bull that would be a good choice to go over British bred heifers. A maternal brother sold in 2022 for \$8,500.

22

**CHATEAU URUGUAY U64****(P B AA)****TATTOO:** JWMPU64 **BORN:** 8/9/2023 **GRADE:** Pure**Black****Polled****%FB:** 95.48**Sire  
Verified**

PLNS POLLED EXECUTIONER 19E (PEDP19E) (P B U)

**SIRE: JYF GENTRY 507G (PP B AA)**

JYF BARCODE 55B (PEDP55B) (P R U)

MERIDEN POLL HEAVYDUTY (PKRFH70) (PP A AA)

**DAM: CHATEAU NOSTALGIC (P A AA)**

CHATEAU KISS ME (JWMFK33) (H A AC)

**January 2025 Southern Limousin BREEDPLAN**

Gest.	BWt	Milk	200wt	400wt	600wt	Doc
-6.4	+ -0.2	+10	+23	+30	+42	+71

*(TRAITS OBSERVED: 200WT,400WT,SS,DOC)*

Purchaser \_\_\_\_\_ \$ \_\_\_\_\_



Another Black heifer bull option that has a gestation in the top 5% and birthweight in the top 7% with a traditional "vealer" bull shape being moderate framed with that Limousin butt. His dam N72 produced Redemption & Sentinel both selling for \$10,000 and Taboo selling in 2023 to Pelican Rise for \$7,000.

23

## CHATEAU UNMATCHED U69

(P A AA)

**TATTOO:** JWMPU69    **BORN:** 13/9/2023    **GRADE:** Pure

Apricot

Polled

%FB: 93.75

TORINO (IMBP317) (R U)

**SIRE: TOM (PP R AA)**

DANI (IMBP552) (R U)

CHATEAU MATADOR (JWMFM51) (Ps A U)

**DAM: CHATEAU QUAINT GIRL (H A AA)**

CHATEAU LIBERAL GIRL (JWMFL62) (H A U)

### January 2025 Southern Limousin BREEDPLAN

Gest.	BWt	Milk	200wt	400wt	600wt	Doc
-2.3	+2.4	+7	+17	+26	+37	+25

(TRAITS OBSERVED: GL,200WT,400WT,SS,DOC)

Purchaser \_\_\_\_\_ \$ \_\_\_\_\_



U69 is an upstanding, high yielding youngster that is flat over his back, long in his middle and wide behind that will be admired by vealer producers. Full brother was selected by Rigdale Limousin's as the pick of the calf crop from our 40th anniversary sale in 2023.

24

**CHATEAU UNITED FRONT U27****(P A AA)****TATTOO:** JWMPU27 **BORN:** 4/3/2023 **GRADE:** Pure

**Apricot**      **Hetero Polled**      **%FB: 94.64**      **Parent**  
                   **(by DNA test)**                                      **Verified**

SYES BACKSTAGE 466B (IMUPK466) (PP BB AA)

**SIRE: CHATEAU QUALIFICATION (PP B AA)**

CHATEAU NOIRE OPAL (JWMPN6) (P B AA)

1-WAY JUST GORGEOUS (IMCFW11) (P A AC)

**DAM: CHATEAU KISS ME (H A AC)**

CHATEAU BRETTELLE (JWMFB61) (H A U)

**January 2025 Southern Limousin BREEDPLAN**

Gest.	BWt	Milk	200wt	400wt	600wt	Doc
-4.6	+1.8	+8	+27	+49	+67	+62

*(TRAITS OBSERVED: GL,BWT,200WT,400WT,600WT,SS,DOC,Genomics)*

Purchaser \_\_\_\_\_ \$ \_\_\_\_\_



A large framed, long bull with a soft skin and hair type who is super gentle to handle with the ability to be used over heifers without compromising on weight gains while maintaining fat cover. A bull to stretch out small framed females to add weight to his calves.

25

## CHATEAU ULTIMATE U5

(P BB AC)

**TATTOO:** JWMPU5    **BORN:** 15/2/2023    **GRADE:** Pure

**Homo. Black**    **Hetero Polled**    **%FB: 92.73**    **Parent**  
(by DNA test)    (by DNA test)       **Verified**

PLNS POLLED EXECUTIONER 19E (PEDP19E) (P B U)

**SIRE: JYF GENTRY 507G (PP B AA)**

JYF BARCODE 55B (PEDP55B) (P R U)

EXLR NATIVE 7133N (IMUPY7133) (PP BB AC)

**DAM: CHATEAU MYSTERIOUS (P B AC)**

MONTROSE HEROINE (AJMPH27) (P B U)

### January 2025 Southern Limousin BREEDPLAN

Gest.	BWt	Milk	200wt	400wt	600wt	Doc
-8.2	+1.9	+7	+33	+56	+80	+67

(TRAITS OBSERVED: BWT,200WT,400WT,600WT,SS,DOC,Genomics)

Purchaser \_\_\_\_\_ \$ \_\_\_\_\_



Ultimate U5 lives up to his name, being a bull that is safe to use on heifers to get them out early but has the growth to take his calves out to heavy supermarket & export weights. Homo Black to take out the colours, U5 is a very versatile sire. Maternal brother to Lots 5 and 9. He was used in herd as a yearling and has backed up our entire spring program of some 70 females coming out the first week of January.



**Females**

26

## CHATEAU PENDANT U72

(PP A AA)

**TATTOO:** JWMPU72    **BORN:** 16/9/2023    **GRADE:** Pure

<b>Apricot</b>	<b>Homo. Polled (by DNA test)</b>	<b>%FB: 93.98</b>	<b>Parent Verified</b>
----------------	---------------------------------------	-------------------	----------------------------

TOMV DIESEL 619D (PEDP619D)

**SIRE: TREF HARDCORE 204H (PP R AA)**

TREF DELANEY 204D (PEDP204D) (P R U)

MERIDEN POLL HEAVYDUTY (PKRFH70) (PP A AA)

**DAM: CHATEAU PENDANT (P A AA)**

LONGREACH DAMASK (BCTFD15) (H A AA)

January 2025 Southern Limousin BREEDPLAN						
Gest.	BWt	Milk	200wt	400wt	600wt	Doc
-4.2	+1.4	+9	+26	+41	+60	+63

(TRAITS OBSERVED: 200WT,DOC,Genomics)

Purchaser \_\_\_\_\_ \$ \_\_\_\_\_



Donor cow prospect Pendant U72 is a female of the highest calibre. Homo Polled with great extension through her neck and shoulder, a strong spine loaded with volume and capacity with natural thickness deep into her lower quarter creating that wedge shape we all strive for. Maternal brother sold for \$7,000 in 2023 and a full brother sells as Lot 4. Hand mated to U67, Lot 5 on the 16/01/25.



27

**CHATEAU VIRTUE V20****(P B AA)****TATTOO:** JWMPV20 **BORN:** 26/2/2024 **GRADE:** Pure**Hetero Black**  
**(by DNA test)****Hetero Polled**  
**(by DNA test)****%FB:** 95.91**Parent**  
**Verified**

EXLR JUDO 459J (PEDPB9295) (P B U)

**SIRE: EXLR NATIVE 7133N (PP BB AC)**

TRAK EXLR ANNIE (PEDPB9298) (P B U)

MERIDEN POLL HEAVYDUTY (PKRFH70) (PP A AA)

**DAM: CHATEAU NOSTALGIA (P A AA)**

CHATEAU KISS ME (JWMFK33) (H A AC)

**January 2025 Southern Limousin BREEDPLAN**

Gest.	BWt	Milk	200wt	400wt	600wt	Doc
-3.8	+2.6	+8	+26	+39	+56	+58

*(TRAITS OBSERVED: BWT,200WT,DOC,Genomics)*

Purchaser \_\_\_\_\_ \$ \_\_\_\_\_



With an attractive data set V20 is a heifer with refinement and class. A joining that John is excited about with the maternal traits of Native, coupled with a French cow that's full of volume and capacity, V20 is a Black female to build a herd around.

28

**CHATEAU OPAL U60****(PP BB AA)****TATTOO:** JWMPU60 **BORN:** 6/9/2023 **GRADE:** Pure

<b>Homo. Black</b>	<b>Homo. Polled</b>	<b>%FB: 93.24</b>	<b>Parent</b>
<b>(by DNA test)</b>	<b>(by DNA test)</b>		<b>Verified</b>

PLNS POLLED EXECUTIONER 19E (PEDP19E) (P B U)

**SIRE: JYF GENTRY 507G (PP B AA)**

JYF BARCODE 55B (PEDP55B) (P R U)

CHATEAU KING TUT (JWMFK32) (P A AA)

**DAM: CHATEAU NIGHTSHADE (P B AA)**

CHATEAU KANDY OPAL (JWMPK103) (P B U)

**January 2025 Southern Limousin BREEDPLAN**

Gest.	BWt	Milk	200wt	400wt	600wt	Doc
-7.3	+1.2	+13	+20	+31	+46	+62

*(TRAITS OBSERVED: GL,200WT,DOC,Genomics)*

Purchaser \_\_\_\_\_ \$ \_\_\_\_\_



Homo Black, Homo Polled Opal U60 is a thick set heifer with a calving ease and maternal pedigree that has worked well for us for a number of years. Her Dam N60 has had three sons, selling in our previous sales and been the heaviest of their group, all selling to repeat clients to a top of \$9,000. With the mating to Warrawindi Prime Mover on 07/12/24, we think U60 could follow in her mother's footsteps.

29

## CHATEAU VENUS V61

**(PP A AC)**

**TATTOO:** JWMPV61    **BORN:** 8/4/2024    **GRADE:** Pure

<b>Apricot</b>	<b>Homo. Polled (by DNA test)</b>	<b>%FB: 95.89</b>	<b>Sire Verified</b>
----------------	---------------------------------------	-------------------	--------------------------

RICHMOND ZODIAC SRD 29Z (IMCPH29) (PP R U)

**SIRE: GOLDSTEIN PARK NEXT LEVEL N25 (PP B AC)**

RICHMOND ZANDY SRD 49Z (IMCPH49) (P B U)

CHATEAU GENIUS (JWMFG30) (P A U)

**DAM: CHATEAU LUNA ECLIPSE (P A AA)**

CHATEAU HIGH FLYER (JWMFH50) (P A U)

January 2025 Southern Limousin BREEDPLAN						
Gest.	BWt	Milk	200wt	400wt	600wt	Doc
-2.6	+2.5	+14	+30	+52	+78	+47

(TRAITS OBSERVED: GL,BWT,200WT,DOC,Genomics)

Purchaser \_\_\_\_\_ \$ \_\_\_\_\_



Venus is a female that John thinks very highly of. Homo Polled daughter of L68 who produced Queenscliff (previous high seller) & Ulverstone U51- Lot 2, this one we feel could be a bull breeder like her dam. A fantastic set of numbers with 10 traits well inside the top 10% with a soft loose skin and has that refined feminine outlook.

30

## CHATEAU UTOPIOA U34

(PP B AA)

**TATTOO:** JWMPU34 **BORN:** 14/3/2023 **GRADE:** Pure

Black      Homo. Polled      %FB: 94.64      Parent  
(by Pedigree)      Verified

SYES BACKSTAGE 466B (IMUPK466) (PP BB AA)

**SIRE: CHATEAU QUALIFICATION (PP B AA)**

CHATEAU NOIRE OPAL (JWMPN6) (P B AA)

CHATEAU KUDOS (JWMFK44) (Ps A U)

**DAM: CHATEAU NO FUSS (PP A AA)**

CHATEAU LULLABY (JWMFL20) (P A U)

### January 2025 Southern Limousin BREEDPLAN

Gest.	BWt	Milk	200wt	400wt	600wt	Doc
-1.6	+1.5	+10	+24	+43	+59	+54

(TRAITS OBSERVED: GL,BWT,200WT,DOC)

Purchaser \_\_\_\_\_ \$ \_\_\_\_\_



Out of Chateau No Fuss N76 who has not missed for us producing thick, powerful progeny and U34 is no exception. Maternal brother sold to Carlsruhe Stud in 2022. Balanced figures, Homo Polled and joined to Warrawindi Prime Mover on 19/12/24 for a Black, Homo Polled calf.

31

## CHATEAU VALUED GIRL V21

(PP A AA)

**TATTOO:** JWMFV21    **BORN:** 27/2/2024    **GRADE:** French Pure

<b>Apricot</b>	<b>Homo. Polled (by DNA test)</b>	<b>%FB: 100</b>	<b>Sire Verified</b>
----------------	---------------------------------------	-----------------	--------------------------

GHR POLLED ZANE (IMCFH4) (P A AA)

**SIRE: CHATEAU REWARD (P A AA)**

CHATEAU NATURAL LOOK (JWMFN11) (P A AA)

CHATEAU KUDOS (JWMFK44) (Ps A U)

**DAM: CHATEAU NOVELTY GIRL (P A U)**

CHATEAU KOOL GIRL (JWMFK52) (P A U)

January 2025 Southern Limousin BREEDPLAN						
Gest.	BWt	Milk	200wt	400wt	600wt	Doc
-1.9	+2.7	+6	+24	+37	+52	+54

(TRAITS OBSERVED: GL,BWT,200WT,DOC,Genomics)

Purchaser \_\_\_\_\_ \$ \_\_\_\_\_



A Homo Polled French Pure heifer, Valued Girl V21 is a long, feminine heifer in a moderate frame. She is a 3/4 sister to Sweet Girl S71, who topped our 2023 - 40th Anniversary Sale at \$16,000 to the Van Der Drift Family of Marcorna Limousin's.

32

**CHATEAU LOTUS V60****(P BB AA)****TATTOO:** JWMPV60 **BORN:** 7/4/2024 **GRADE:** Pure**Homo. Black**  
(by DNA test)**Hetero Polled**  
(by DNA test)**%FB:** 91.08**Parent**  
**Verified**

MANDAYEN MR JOCK K10 (MDNPK10) (P R AA)

**SIRE: CHATEAU SOUTH PAW S30 (P B AA)**

CHATEAU NIGHTSHADE N92 (JWMPN92) (P B AA)

SYES BACKSTAGE 466B (IMUPK466) (PP BB AA)

**DAM: CHATEAU QUESTA Q85 (P BB AA)**

MONTROSE HEAVENLY (AJMPH2) (H B U)

**January 2025 Southern Limousin BREEDPLAN**

Gest.	BWt	Milk	200wt	400wt	600wt	Doc
-2.6	+1.1	+13	+24	+45	+60	+56

(TRAITS OBSERVED: GL,BWT,200WT,DOC,Genomics)

Purchaser \_\_\_\_\_ \$ \_\_\_\_\_



Lotus V60 is a docile, Homo Black daughter of Q85 who is a cow that works super hard. A well muscled female with an EBV chart that reads well & balanced across the board. Maternal sister sold in 2023 to Tom Isedale and full brother sold privately for \$10,000 to a progressive commercial program.



33

# CHATEAU PEARL V59

(PP A AA)

**TATTOO:** JWMPV59    **BORN:** 5/4/2024    **GRADE:** Pure

<b>Apricot</b>	<b>Homo. Polled (by DNA test)</b>	<b>%FB: 95.48</b>	<b>Parent Verified</b>
----------------	---------------------------------------	-------------------	----------------------------

PLNS POLLED EXECUTIONER 19E (PEDP19E) (P B U)

**SIRE: JYF GENTRY 507G (PP B AA)**

JYF BARCODE 55B (PEDP55B) (P R U)

CHATEAU NEW GENERATION (JWMFN79) (P A AA)

**DAM: CHATEAU RARE PEARL (P A AA)**

CHATEAU KRYSTAL PEARL (JWMFK41) (P A U)

January 2025 Southern Limousin BREEDPLAN						
Gest.	BWt	Milk	200wt	400wt	600wt	Doc
-6	+0.2	+10	+24	+34	+54	+66

(TRAITS OBSERVED: GL,BWT,200WT,DOC,Genomics)

Purchaser \_\_\_\_\_ \$ \_\_\_\_\_



Moderate framed, thick bodied, Homo Polled maternal sister to Lot 1. A handy set of numbers V59's dam is a cow that's long and wedge shaped with loads of volume and can breed them good, with this heifer being no exception. A moderate framed heifer that could leave sought after bulls or make thick set show steers.



34

## CHATEAU UNIVERSAL GIRL U8

(P A AA)

**TATTOO:** JWMFU8      **BORN:** 18/2/2023      **GRADE:** French Pure

<b>Apricot</b>	<b>Hetero Polled (by DNA test)</b>	<b>%FB: 100</b>	<b>Sire Verified</b>
----------------	--	-----------------	--------------------------

1-WAY POLLED KANA (IMCFV64) (PP A U)

**SIRE: CHATEAU MATADOR (Ps A U)**

CHATEAU KISS ME (JWMFK33) (H A AC)

CHATEAU JERICHO (JWMFJ28) (H A U)

**DAM: CHATEAU LAKOTA GIRL (P A AA)**

CHATEAU JUST A GIRL (JWMFJ14) (P A U)

January 2025 Southern Limousin BREEDPLAN						
Gest.	BWt	Milk	200wt	400wt	600wt	Doc
-1.6	+3.8	+10	+26	+42	+67	+41

(TRAITS OBSERVED: GL,BWT,200WT,400WT,DOC,Genomics)

Purchaser \_\_\_\_\_ \$ \_\_\_\_\_



U8 is a Polled French heifer with a pedigree that is a little different. M51 on the top side breeds rugged and heavy bulls, with Jericho on the dam's side being a consistent producer for the Mistletoe program. Al'd to Meriden Polled Heavy Duty in June and backed up with U51, either way we are excited to see what this heifer will do. Two full brothers have featured in our sales, selling to a top of \$9,000 to Rolma Limousin's.

35

**CHATEAU WEALTH U20**

(PP B AA)

**TATTOO:** JWMPU20 **BORN:** 24/2/2023 **GRADE:** Pure

<b>Hetero Black</b>	<b>Homo. Polled</b>	<b>%FB: 94.64</b>	<b>Sire</b>
(by DNA test)	(by DNA test)		Verified

SYES BACKSTAGE 466B (IMUPK466) (PP BB AA)

**SIRE: CHATEAU QUALIFICATION (PP B AA)**

CHATEAU NOIRE OPAL (JWMPN6) (P B AA)

CHATEAU NEW GENERATION (JWMFN79) (P A AA)

**DAM: CHATEAU SILHOUETTE S9 (P A U)**

CHATEAU KUDDLE ME (JWMFK38) (P A U)

**January 2025 Southern Limousin BREEDPLAN**

Gest.	BWt	Milk	200wt	400wt	600wt	Doc
-0.7	+1.6	+11	+24	+36	+52	+61

(TRAITS OBSERVED: GL,BWT,200WT,DOC,Genomics)

Purchaser \_\_\_\_\_ \$ \_\_\_\_\_



A Q66 daughter that's long and feminine with a gentle nature. U20 is an easy doing heifer that always makes you have a second look at her. Joined in November to JYF Hamilton on 18/11/24 for a Homo Polled calf and from what we've seen at Tanybryn Park and Tooronga should be pretty exciting.

36

**CHATEAU LOTUS V32****(P B AA)****TATTOO:** JWMPV32 **BORN:** 5/3/2024 **GRADE:** Pure**Hetero Black**  
(by DNA test)**Hetero Polled**  
(by DNA test)**%FB:** 91.67**Sire**  
**Verified**

BALAMORE ENDEAVOR 701E (IMCPBLM701E) (PP BB AA)

**SIRE: CHATEAU TALISMAN T2 (P BB AC)**

CHATEAU MYSTERIOUS (JWMPM54) (P B AC)

ANCHOR B YUKON 30Y (IMCPG30) (PP A AA)

**DAM: CHATEAU SOPHISTICATED S60 (P A AA)**

CHATEAU LOTUS (JWMPL10) (P A AA)

**January 2025 Southern Limousin BREEDPLAN**

Gest.	BWt	Milk	200wt	400wt	600wt	Doc
-7.6	+0.5	+9	+24	+41	+54	+54

*(TRAITS OBSERVED: BWT,200WT,DOC,Genomics)*

Purchaser \_\_\_\_\_ \$ \_\_\_\_\_



V32 is a strong topped heifer that is well muscled and thick from behind. A heifer's first calf Lotus V32's granddam produced Powerplay that has been influential for the Mistletoe herd, producing Junior Champion Female at the last 2 years National Show and Sale. Her sire Talisman T2 sold as Lot 2 in last year's sale for \$9,000.

37

**CHATEAU PENDANT V15****(P B AA)****TATTOO:** JWMPV15 **BORN:** 24/2/2024 **GRADE:** Pure**Hetero Black**  
(by DNA test)**Hetero Polled**  
(by DNA test)**%FB:** 95.48**Parent**  
**Verified**

PLNS POLLED EXECUTIONER 19E (PEDP19E) (P B U)

**SIRE: JYF GENTRY 507G (PP B AA)**

JYF BARCODE 55B (PEDP55B) (P R U)

MERIDEN POLL HEAVYDUTY (PKRFH70) (PP A AA)

**DAM: CHATEAU PENDANT (P A AA)**

LONGREACH DAMASK (BCTFD15) (H A AA)

**January 2025 Southern Limousin BREEDPLAN**

Gest.	BWt	Milk	200wt	400wt	600wt	Doc
-4.7	+0.6	+12	+24	+38	+50	+70

*(TRAITS OBSERVED: BWT,200WT,DOC,Genomics)*

Purchaser \_\_\_\_\_ \$ \_\_\_\_\_



Pendant V15 is a moderate framed, big barrelled heifer that's heavily muscled. A heifer to leave easy calving, stout made sons or breed some thick, heavy built show steers. Maternal sister to Lots 4 & 26.

38

## CHATEAU UP & COMING U73

(PP A AA)

**TATTOO:** JWMPU73    **BORN:** 16/9/2023    **GRADE:** Pure

<b>Apricot</b>	<b>Homo. Polled (by DNA test)</b>	<b>%FB: 94.64</b>	<b>Sire Verified</b>
----------------	---------------------------------------	-------------------	--------------------------

SYES BACKSTAGE 466B (IMUPK466) (PP BB AA)

**SIRE: CHATEAU QUALIFICATION (PP B AA)**

CHATEAU NOIRE OPAL (JWMPN6) (P B AA)

POSTHAVEN P ZANSIBAR (IMCFH17) (PP A AA)

**DAM: CHATEAU NOVELTY (P A U)**

CHATEAU HIRONDELLE (JWMFH39) (H A U)

January 2025 Southern Limousin BREEDPLAN						
Gest.	BWt	Milk	200wt	400wt	600wt	Doc
-1	+2	+11	+27	+45	+63	+56

(TRAITS OBSERVED: GL,200WT,DOC,Genomics)

Purchaser \_\_\_\_\_ \$ \_\_\_\_\_



Up & Coming U73 is a soft, deep bodied heifer that's good over her top and is easy to handle. With a nice set of figures, this well balanced Homo Polled heifer is a smart package. AI'd to Warrigal Queue Up on 08/12/24.1/2 sister sold at the Limousin National to Laverna Park Limousin's in 2021.

39

# CHATEAU GOLDEN GIRL V3

(PP A AA)

**TATTOO:** JWMPV3      **BORN:** 16/2/2024      **GRADE:** Pure

<b>Apricot</b>	<b>Homo. Polled (by DNA test)</b>	<b>%FB: 93.98</b>	<b>Parent Verified</b>
----------------	---------------------------------------	-------------------	----------------------------

TOMV DIESEL 619D (PEDP619D)

**SIRE: TREF HARDCORE 204H (PP R AA)**

TREF DELANEY 204D (PEDP204D) (P R U)

MERIDEN POLL HEAVYDUTY (PKRFH70) (PP A AA)

**DAM: CHATEAU NOVEL GIRL (P A AA)**

MONTROSE GOLDEN GIRL (AJMFG20) (H A AA)

January 2025 Southern Limousin BREEDPLAN						
Gest.	BWt	Milk	200wt	400wt	600wt	Doc
-4.3	+2.5	+6	+31	+46	+72	+61

(TRAITS OBSERVED: BWT, 200WT, DOC, Genomics)

Purchaser	\$
-----------	----



V3 is Alana & Olivia's heifer and I'm in the bad books for putting her in the sale. While very hard to part with V3 is a powerful, heavy built heifer that has a beautiful loose soft skin, fantastic head carriage and volume and capacity to burn. A beautiful nature, this Homo Polled heifer commands attention from every angle. From the same cow line that produced Next Generation N79 topping our 2019 sale to Rigdale Limousin's, Pampered Girl P72 Reserve Junior Champion at the National selling to Brentvale Limousin's in S.A. and Jackknife, past herd sire at Garren Park to name a few. Donor cow prospect and front paddock female who we would love to flush one day.



40

## CHATEAU OPAL U22

(P B U)

**TATTOO:** JWMPU22 **BORN:** 26/2/2023 **GRADE:** Pure

Black

Polled

%FB: 89.48

WZRK PRIME CUT 8012Y (IMUPG8012) (PP A AA)

**SIRE: BRENTVALE KINGSWOOD (PP A AA)**

FOONE GAYLE E501 (FBGPE501) (PP B U)

MARYVALE HAMMERTIME H300 (AMSPH300) (P B U)

**DAM: CHATEAU MESSINA (P B U)**

MONTROSE JAPONICA (AJMPJ5) (PP BB U)

### January 2025 Southern Limousin BREEDPLAN

Gest.	BWt	Milk	200wt	400wt	600wt	Doc
-3.2	+1.6	+5	+23	+43	+57	+50

(TRAITS OBSERVED: GL,200WT,400WT,DOC)

Purchaser \_\_\_\_\_ \$ \_\_\_\_\_



Opal U22 is a clean coated, smooth made heifer that is fine through the front end but still big in her midsection. Her dam M79 produced Recall, top selling in 2022 selling to \$12,000 and Thunderstruck 2nd high priced at \$10,000 last year, whilst Granddam was a full sister to Jose Cuervo who topped out Inaugural sale at \$10,000. By Kingswood who has bred some wonderful females for Brentvale. Due to calve by the sale to Talisman T2, see supplementary sheet for details.



Thank-you for  
your attendance and  
support today

## **BUYER DELIVERY INSTRUCTIONS**

At the completion of the sale we ask all successful purchasers to attend the office and inform us of your delivery instructions.

## **LOOKING AFTER YOUR NEW PURCHASE**

As our cattle are run in groups they are used to having other stock around and are never left in yards by themselves. Upon arrival please ensure that your purchase has company (a steer or cow) and plenty of food whilst they survey their new surroundings. Be aware that this is a new environment to them and will take a while to get use to both you and your farm.

# UNDERSTANDING EBVs

An Estimated Breeding Value (EBV) is an estimate of the genetic merit of that animal for each trait measured.

EBVs are provided for the following traits:

**Gestation Length:** ranks sires for the time between conception and the birth of a calf. Shorter gestation is indicated by negative EBVs and longer by positive EBVs.

**Birth Weight:** indicates the genetic potential for birth weight. Positive EBVs indicate higher birth weights and negative EBVs indicate lower birth weights of progeny.

**Milk:** a key component of fast growth to weaning is the dam's maternal performance. A bull with a high milk EBV should produce daughters which milk well.

**200, 400 & 600 Day Weight:** give us an estimation of the animal's genetic potential for growth.

**Docility:** is expressed as the increase or decrease in the percentage of progeny that will be scored as docile (score 1 or 2). Positive EBVs indicate a higher proportion of progeny that will be scored as docile and negative EBVs indicate a lower percentage of progeny being scored as docile.

**Comparing EBVs:** The EBVs for Limousins cannot be compared with EBVs for animal of other breeds. They should be compared with the current average EBV for the Limousin breed.

## BREED AVERAGES EBV's FOR 2023 BORN CALVES

Gest.	BWt	Milk	200wt	400wt	600wt	Doc
-3.0	+1.4	+8	+22	+38	+53	+47

**Accuracies:** are presented with each EBV and give an indication of the amount of information that has been used in the calculation of that EBV. The higher the accuracy the lower the likelihood of change in the animal's EBV as more information is analysed for that animal and its relatives.

**Disclaimer:** The Estimated Breeding Values (EBVs) contained within this sale catalogue were compiled by the Agricultural Business Research Institute (ABRI) from the data supplied by breeders. Neither the Australian Limousin Breeders' Society or ABRI oversee or audit the collection of this data.

## EXPLANATION OF SUFFIXES

### **HORN STATUS:**

(PP) Homozygous Polled by DNA test or pedigree as both parents confirmed Homozygous Polled

(P) Polled

(Ps) Polled with Scurs

(H) Horned

### **COLOUR:**

(BB) Homozygous Black by DNA test or pedigree as both parents confirmed Homozygous Black

(B) Black

(A) Apricot

(R) Red (not apricot).

### **F94L GENE:**

(AA) 2 copies by DNA test or pedigree as both parents confirmed to carry 2 copies

(AC) 1 copy by DNA test

(CC) No copies by DNA test

(U) Un-tested

# THE SCURRED GENE IN CATTLE

Some polled cattle have scurs. Scurs are incompletely developed horns that are generally attached only to the skin. They range in size from tiny scab-like growths to large protrusions almost as large as horns.

Therefore, polled cattle can be smooth-polled or scurred-polled (polled but expressing scurs).

Many breeders have the mistaken idea that scurs represent an error in transmitting the horned characteristic. That's not the case. Scurred cattle should be classified as polled since they do have a polled gene. Only polled animals can express the scurred trait.

## CATALOGUE DISCLAIMER

While all care has been taken in compiling this catalogue however responsibility lies with prospective purchasers to determine its accuracy.

Chateau Limousins reserves the right to retain 1/4 semen share for any lots offered for sale for in herd use only, with no further call on the bull. Collection to occur prior to delivery at vendors expense.

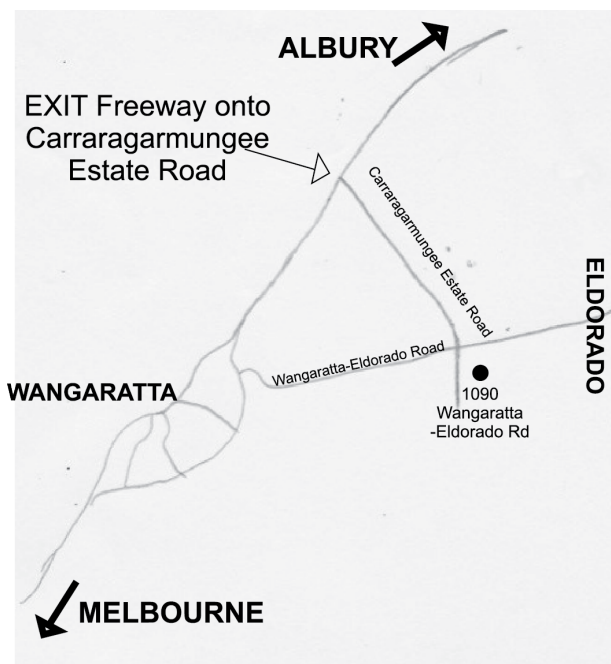
We reserve the right to make adjustment to sale order, substitutes to sale lots which will be notified to intending buyers via supplementary sheet on sale day.

# GETTING TO CHATEAU LIMOUSINS

1090 Wangaratta-Eldorado Road,  
LONDRIGAN VIC 3678

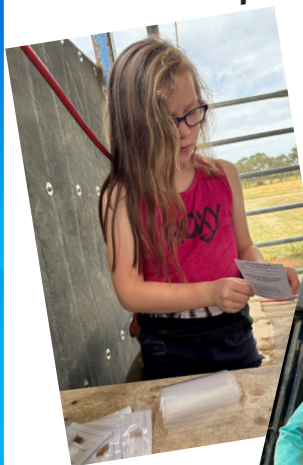
## FROM HUME FREEWAY

Take Carraragarmungee Estate Road travel 8km, turn left onto Wangaratta Eldorado Road, first property on the right. (Approx 15km from Wangaratta)

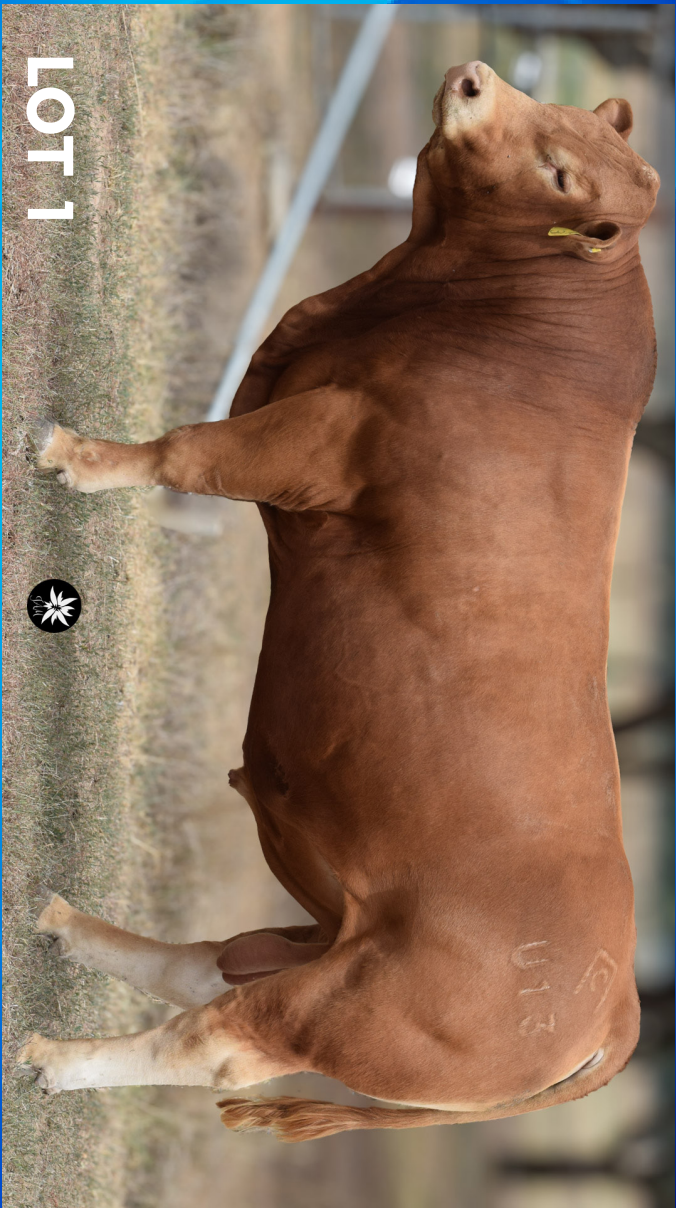


## This image shows a full page of a document template. It consists of a series of evenly spaced, horizontal black lines on a white background. The lines are uniform in thickness and extend across the entire width of the page, providing a guide for writing or drawing. There are no margins, text, or other markings present.

## Farm Jobs with our Little Helpers







LOT 1

